

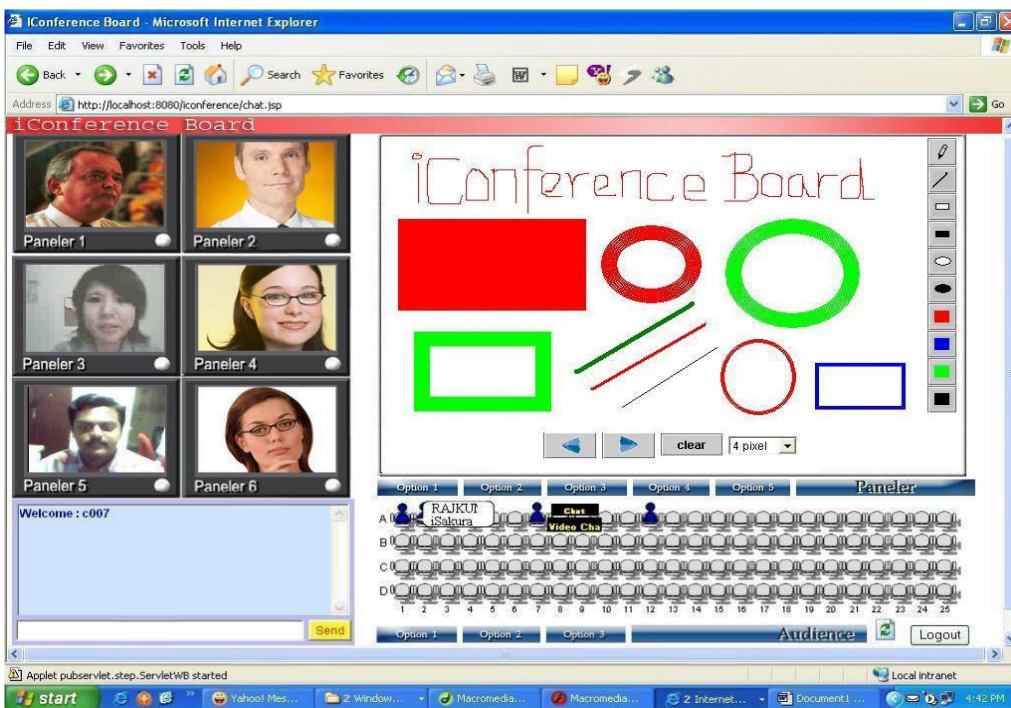


iConference - Board is an Interactive Meeting System for executives within a company or network. It is associated with White Board, Chat, Private Chat and video Chat.

Seminars can be conducted and viewed globally.

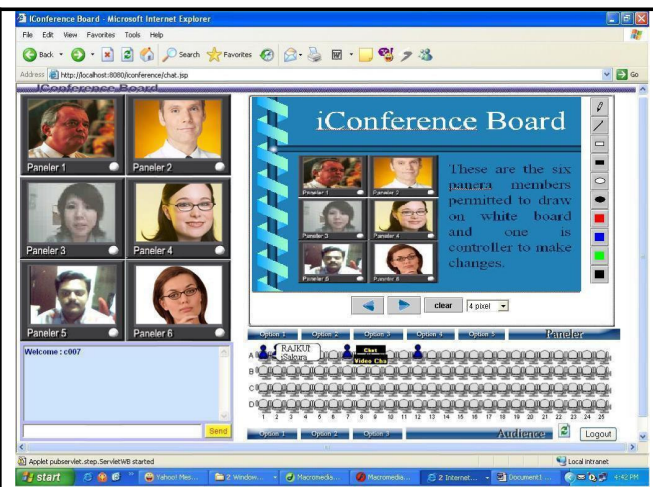
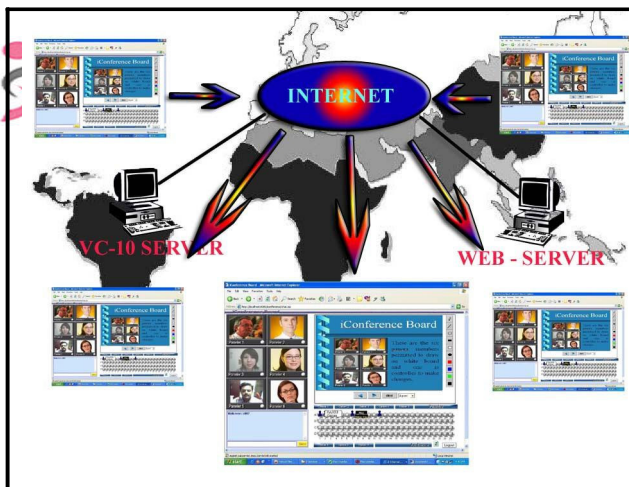
It also supports communication and interchange of data as slides and drawing images.

White board is featured with free hand drawing, text matter with different colors and drawing desired images.



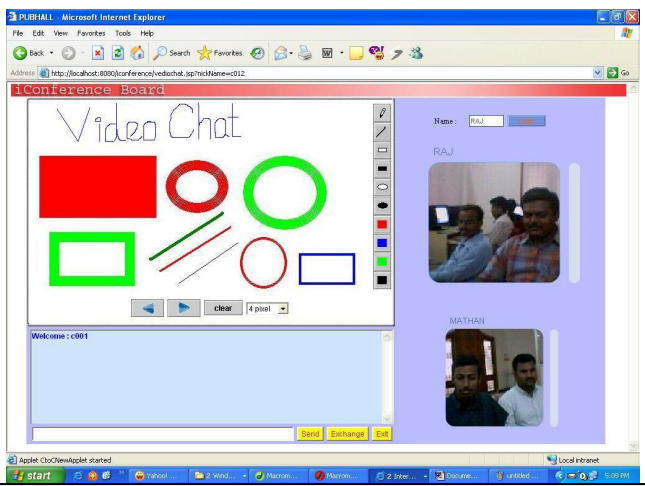
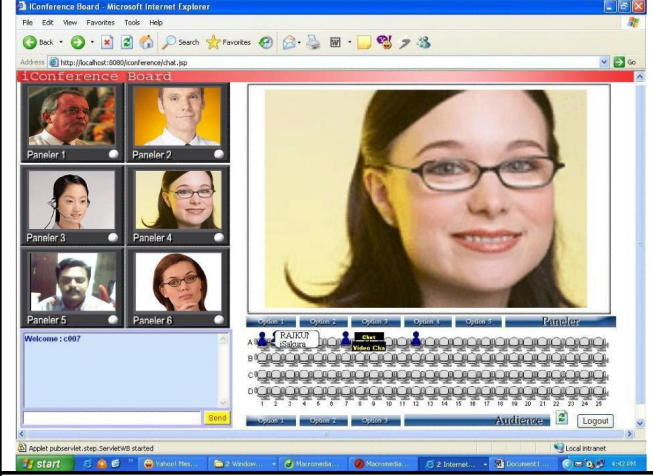
iConference Board, gives access to six panera members, one among them being the Controller. It additionally contains 100 participants (normal users) who can enter into the hall and chat among themselves. Users are deprived from accessing the white board. The Controller is authorized to change any one of the panera member's video image instead of the white board.





Audience who has entered into the hall will be placed with an image in their allocated seats. One of the audience can know others information by moving the mouse over the image and can also call another, for Private Chat or Private Video chat (voice enabled) by clicking that audience image.

ASP – APPLICATION SERVER



FEATURES

- Directly can send mail
- Within members easily exchange business cards

Total number of members in an event can easily find out with image representation.

CONFIGURATION REQUIREMENTS

	For WEB Server & VC-10 Server	Client Systems
CPU	Intel Pentium IV – 1GHz	Intel Pentium – 600MHz
OS	Linux / Windows 2000 Server / Windows 2003 Server	Windows 2000 / Windows XP
RAM	512 MB SD RAM	256 MB SD RAM
HDD	20 GB	10 GB